

medipal

# CHLORINE DISINFECTANT Wipes



Our ready to use Chlorine Wipes deliver a rapid biocidal action against a broad spectrum of micro-organisms and spores across non-porous surfaces of non-invasive medical devices.

**1 product in this range.**

## At a glance:



- PHMB free
- Alcohol free
- Dermatologically tested
- Low chlorine odour
- Ready to use

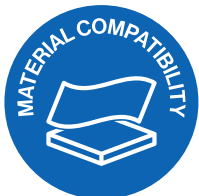
## Ideal for:



- High level disinfection where there is a known or high risk of infection\*
- Rapid use in time sensitive areas with ready to use format
- Use where toxicity or corrosion from other high level disinfectants causes issues

\* Not intended for end point sterilisation of medical devices

## Material compatibility:



- Acrylic (PMMA)
- Polycarbonate (PC)
- Polyethylene(PE)
- Polyvinylchloride (PVC)
- Waterproof fabric
- 316 Stainless Steel
- 304S15 Stainless Steel

## Sustainability:



- Cardboard used in our outer packaging is FSC approved

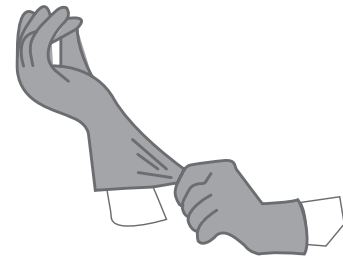


# medipal

## How to use

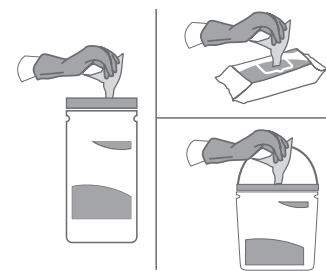
### STEP 1 Risk assessment

Please follow your agreed risk assessment policy guidelines regarding the use of PPE. Check medical device equipment manufacturers guidelines for sodium hypochlorite suitability.



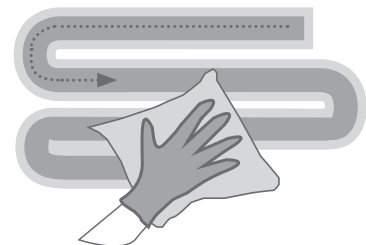
### STEP 2 Wipe selection

Check pack for use period and dispense a wipe. Close pack to protect remaining wipes. If visible soil is present, remove with a wipe. Use a fresh wipe to disinfect the surface.



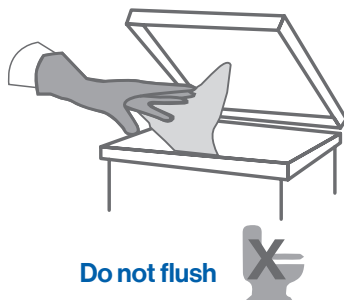
### STEP 3 S-Shape technique

Wipe the surface in an S-Shape moving from clean to dirty. Use the wipe flat not scrunched, ensuring the entire surface is wetted. Do not go over the same area twice with the same wipe. Use a fresh wipe if your wipe becomes soiled or dry.



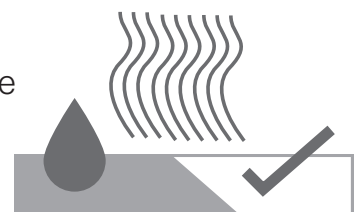
### STEP 4 Discard

Do not re-use wipes. Discard used wipes in the appropriate waste bin following your local agreed guidelines.



### STEP 5 Let dry

Allow the surface to dry naturally before use. Leave the surface for the stated contact time.



Use biocides safely. Always read the label and product information before use. Re-use of wipes increases the risk of infection, discard each wipe after single use. Store in a cool, dry place out of direct sunlight.

# medipal

## Technical details

Our unique Sodium Hypochlorite formulation delivers the efficacy you need at a lower pH than comparable Peracetic Acid or Hydrogen Peroxide wipes (pH 8.5-10 compared to pH 12). This means the wipes are less corrosive on surfaces affected by higher values.

The unique ready-to-use flow wrap packaging also creates less waste, requires less storage space and is more environmentally friendly to transport.

### Chemical formulation:



Medipal Chlorine Disinfectant Wipes are made with stabilised Sodium Hypochlorite NaClO. The extremely powerful chlorine based disinfectant solution has more than 1000 ppm available chlorine and therefore exhibits broad spectrum anti microbial activity with a lower pH than many other chlorine products.

### Materials:



Spunlace material is made by mechanically entangling fibres through the application of high pressure water jets. This gives the material a thick, soft and strong feel. The apertured texture gives the wipes a high liquid capacity which makes them suitable for wiping larger surfaces and the drape of the material gives a 'cloth-like' feel.

## Efficacy details

Effective against	Test	Kill time
<b>Bactericidal</b>		
Leptospira interrogans	EN 13727	1 minute
Enterococcus hirae	EN 16615	1 minute
	EN 13727	1 minute
Pseudomonas aeruginosa	EN 16615	1 minute
	EN 13727	1 minute
Staphylococcus aureus	EN 16615	1 minute
	EN 13727	1 minute
<b>Mycobactericidal</b>		
Mycobacterium avium	EN 14348	1 minute
Mycobacterium terrae	EN 14348	1 minute
<b>Sporicidal</b>		
Bacillus cereus	EN 17126	5 minutes
Bacillus subtilis	EN 17126	5 minutes
Clostridioides difficile* *as tested on spores	EN 17126	3 minutes
	EN 16615	2 minutes
	EN 17846	5 minutes

Effective against	Test	Kill time
<b>Virucidal</b>		
Adenovirus 5*	EN 14476	1 minute
	EN 16777	1 minute
Murine norovirus*	EN 14476	1 minute
	EN 16777	1 minute
Poliovirus* * These organisms represent Full Virucidal efficacy according to EN 14476:2013+A2:2019 Annex A	EN 14476	1 minute
	EN 14476	1 minute
Coronavirus* *Tested against Human Coronavirus, strain 229E	EN 14476	1 minute
<b>Yeasticidal and Fungicidal</b>		
Aspergillus brasiliensis	EN 13624	2 minutes
Candida albicans	EN 16615	1 minute
	EN 13624	2 minutes
Candida auris	EN 13624	1 minute

## Product specification:



**Count** – 50 wipes per pack

**Packs per case** – 12

**Product Code** – S570110MPCE

**Classification** – Medical Devices  
Class IIa



**Pal International Limited**

Unit 3 Mountpark, Bardon II  
Victoria Road,  
Ellistown, Coalville,  
LE67 1FA

E: [info@palinternational.com](mailto:info@palinternational.com)

**EC REP Advena Limited**

Tower Business Centre  
2nd Floor  
Tower Street Swatar  
BKR 4013, Malta

E: [info@advena.mt](mailto:info@advena.mt)