

medipal

Disinfectant Wipes



Our best selling range of everyday disinfecting wipes, Medipal Disinfectant Wipes offer great flexibility. Powerful combination chemistry delivers broad spectrum efficacy that's intended for disinfecting surfaces of non-invasive medical devices.



At a glance:



- Alcohol free
- PHMB free
- Dermatologically tested
- Ready to use
- Biodegradable formulation

Ideal for:



- Intermediate disinfection where there is a known or a risk of infection*
- All healthcare environments; available in flow wraps, canisters and buckets
- Disinfecting surfaces of non-invasive medical devices and equipment

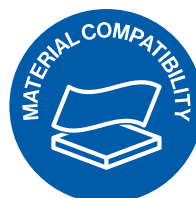
*Not intended for end point sterilisation of medical devices.

Sustainability:



- 89% plastic reduction for refill bag vs the bucket with lid
- Lighter 2 litre canister with 27% plastic reduction
- Tritex material, canister, buckets, lids, and labels are fully recyclable
- Cardboard used in our outer packaging is FSC approved

Material compatibility:



- Acrylic (PMMA)
- Polycarbonate (PC)
- Polyethylene (PE)
- Polyvinylchloride (PVC)
- Waterproof fabric
- 316 Stainless Steel
- 304S15 Stainless Steel

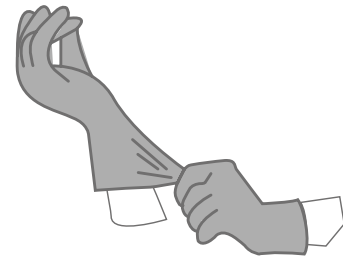


medipal

How to use

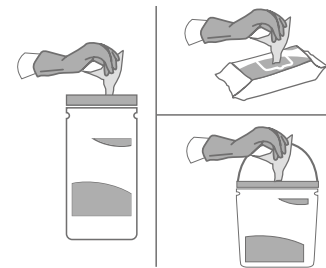
STEP 1 Risk assessment

Please follow your agreed risk assessment policy guidelines regarding the use of PPE. Check medical device equipment manufacturers guidelines for DDAC and Triamine suitability.



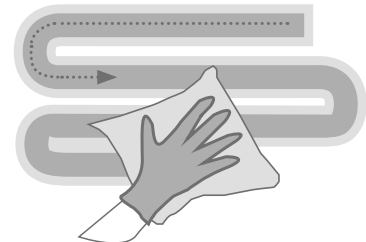
STEP 2 Wipe selection

Check pack for use period and dispense a wipe. Close pack to protect remaining wipes. If visible soil is present, remove with a wipe. Use a fresh wipe to disinfect the surface.



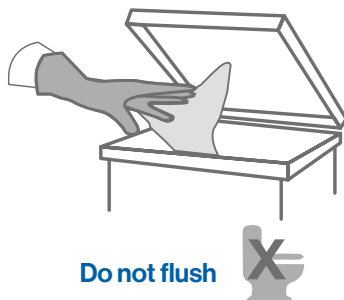
STEP 3 S-Shape technique

Wipe the surface in an S-Shape moving from clean to dirty. Use the wipe flat not scrunched, ensuring the entire surface is wetted. Do not go over the same area twice with the same wipe. Use a fresh wipe if your wipe becomes soiled or dry.



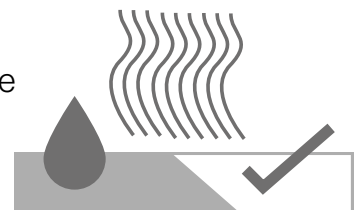
STEP 4 Discard

Do not re-use wipes. Discard used wipes in the appropriate waste bin following your local agreed guidelines.



STEP 5 Let dry

Allow the surface to dry naturally before use. Leave the surface for the stated contact time.



Use biocides safely. Always read the label and product information before use. Re-use of wipes increases the risk of infection, discard each wipe after single use. Store in a cool, dry place out of direct sunlight.

medipal

Technical details

Medipal's proprietary Tritex[®] material is made by bonding layers of spunbond and meltblown polypropylene fibres together in a high heat process. The addition of a hydrophilic coating means optimum and consistent liquid discharge.

Chemical formulation:

Medipal Disinfectant Wipes use an exclusive high specification combination chemistry, effectively blending two disinfectant compounds, DDAC and Triamine, to produce a highly efficacious, broad spectrum, alcohol free disinfectant (in both clean & dirty conditions).

Materials:

Tritex[®] material is made by bonding layers of spunbond and meltblown polypropylene fibres together in a high heat process before a hydrophilic coating is applied. This material is 100% synthetic.



High strength

The material offers high strength in both directions – across and along the wipe.



Excellent solution retention

Ensuring even wetness throughout the wipe.



Very low linting

Low risk of leaving contaminating fibres on surfaces.



Efficient solution release

Active wipe ingredients are transferred to the surface rather than being trapped in the wipe material fibres.

Efficacy details

Effective against	Test	Contact / Kill time	
		Dirty conditions	Clean conditions
Bactericidal			
Enterococcus hirae	EN 16615	1 minute	1 minute
	EN 13727	1 minute	30 seconds
Pseudomonas aeruginosa	EN 16615	1 minute	1 minute
	EN 13727	1 minute	30 seconds
Staphylococcus aureus	EN 16615	1 minute	1 minute
	EN 13727	1 minute	30 seconds
Escherichia coli	EN 13727	1 minute	30 seconds
	EN 13727	1 minute	30 seconds
Mycobactericidal			
Mycobacterium avium	EN 14348		1 minute
Mycobacterium terrae	EN 14348		1 minute
Virucidal			
Adenovirus type 5	EN 14476	2 minutes	1 minute
	EN 16777		1 minute
Murine Norovirus	EN 14476	2 minutes	1 minute
	EN 16777		1 minute
Poliovirus	EN 14476		2 minutes
Vaccinia virus	EN 14476	1 minute	1 minute
Coronavirus*	EN 14476	30 seconds	1 minute
	EN 16777		1 minute
*Tested against Human coronavirus, strain 229E			
Yeasticidal and Fungicidal			
Aspergillus brasiliensis	EN 13624		2 minutes
Candida albicans	EN 16615	1 minute	1 minute
	EN 13624	1 minute	1 minute

Additional Organisms

Bactericidal			
Enterococcus faecium	EN 13727		30 seconds
Acinetobacter baumannii	EN 13727	1 minute	30 seconds
Klebsiella pneumoniae	EN 13727	1 minute	30 seconds
MRSA (Methicillin Resistant Staphylococcus aureus)	EN 13727		1 minute
VRE (Vancomycin Resistant Enterococcus faecalis)	EN 13727		1 minute
MRSE (Methicillin Resistant Staphylococcus epidermidis)	EN 13727		2 minutes
Multidrug Resistant Acinetobacter baumannii	EN 13727		2 minutes
VRE (Vancomycin Resistant Enterococcus faecium)	EN 13727		2 minutes
Carbapenem Resistant Escherichia coli	EN 13727		2 minutes
Carbapenem Resistant Klebsiella pneumoniae	EN 13727		2 minutes
Multidrug Resistant Pseudomonas aeruginosa	EN 13727		2 minutes
Yeasticidal			
Candida Auris	EN 13624		1 minute

Pal Disinfectant Wipes have been tested to EN standards under clean and dirty conditions using the wipe or liquid squeezed from the wipe.

Disinfectant V15 Feb 2024

medipal

Products within this range



50 Wipe Flow Wrap

Packs per case – 24

Classification – Medical Device Class IIa

Product Code – S524110MPCE, S520110MPCE



200 Wipe Flow Wrap

Packs per case – 6

Classification – Medical Device Class IIa

Product Code – S522110MPCE, S529110MPCE, S625110MPCE



200/240 Wipe Canister

Packs per case – 10

Classification – Medical Device Class IIa

Product Code – W615110MPCE, W520110MPCE



200/225/350 Wipe Bucket

Packs per case – 4

Classification – Medical Device Class IIa

Product Code – W621110MPCE, W527110MPCE, W522110MPCE



225 Wipe Refill

Packs per case – 4

Classification – Medical Device Class IIa

Product Code – Q527110MPCE

Pal International Limited

Unit 3 Mountpark,
Victoria Road,
Ellistown,
Coalville,
LE69 1FA, UK

E: info@palinternational.com

W: www.palinternational.com

EC REP Advena Limited

Tower Business Centre
2nd Floor
Tower Street Swatar
BKR 4013, Malta

E: info@advena.mt