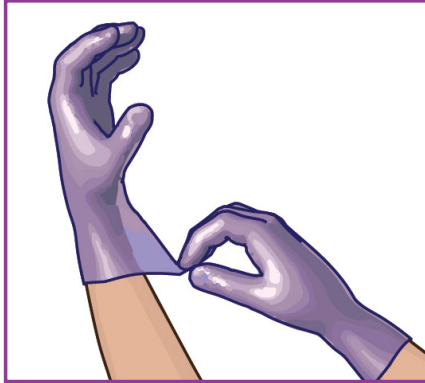
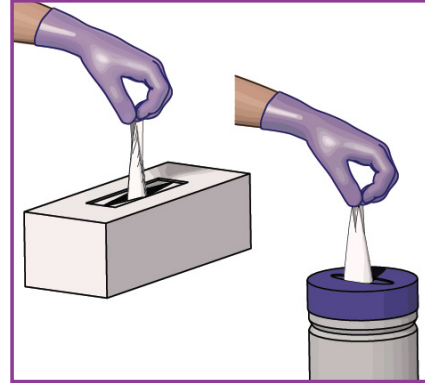


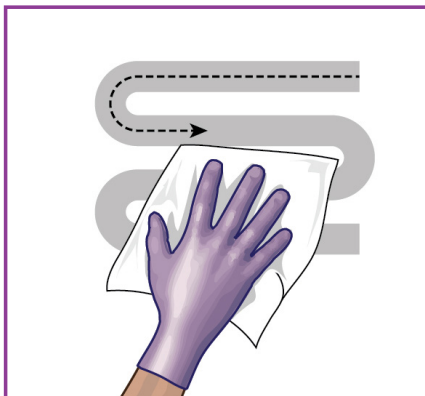
## FACTSHEET 5: How to use disposable wipes for environmental cleaning



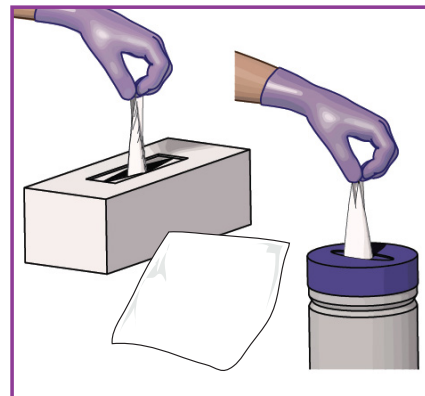
1. Risk assessment: following your local policy guidelines, put on any necessary personal protective equipment



2. Select wipe: take a wipe from the dispenser and close the pack firmly to prevent remaining wipes from drying out



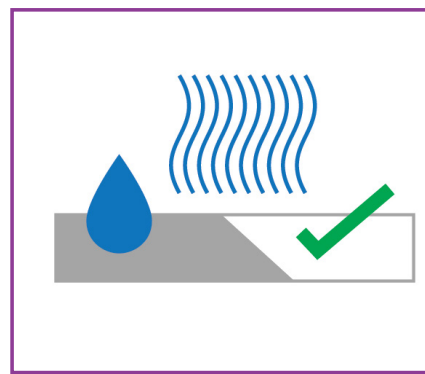
3. S-shape technique: Holding the wipe flat in your hand (not scrunched), wipe the surface in an 'S' shape, moving from clean to dirty. Do not go over the same surface twice with the same wipe



4. Fresh wipe: use a fresh wipe if the one you're using becomes soiled or dry



5. Discard: dispose of used wipes in the appropriate waste bin following your local policy guidelines



6. Allow to dry: wait until the surface is dry before use

Use disinfectants safely

Always read the manufacturer's instructions and product information before use