

LISTERIOSIS

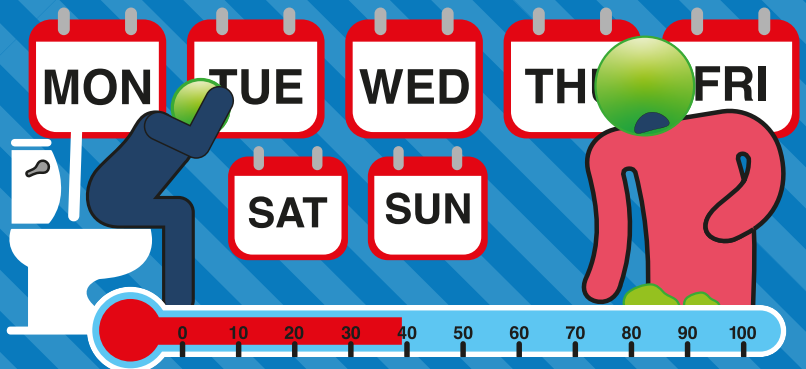
Escherichia coli (E. coli) is a type of bacteria that can be found in the intestines of people and animals.

WHAT IS LISTERIOSIS?

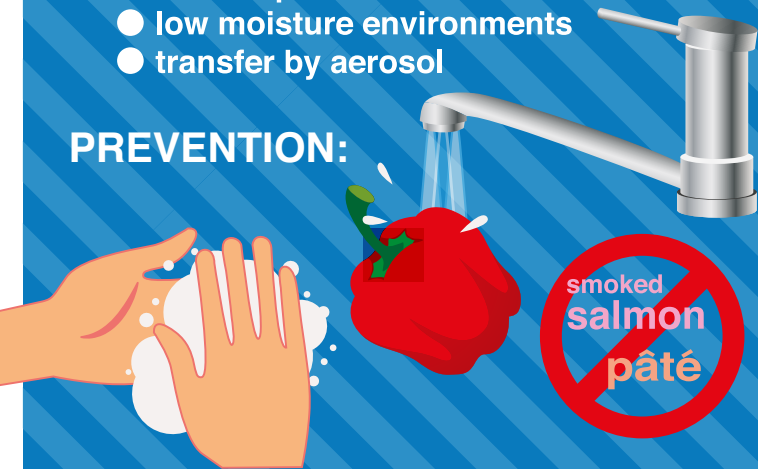


- low temperatures
- low moisture environments
- transfer by aerosol

SIGNS & SYMPTOMS:



PREVENTION:



VULNERABLE GROUPS:

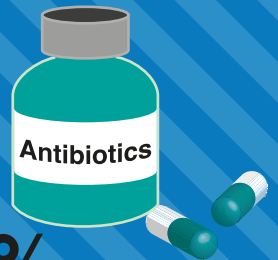


TREATMENT OPTIONS:

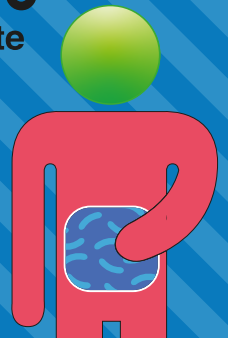
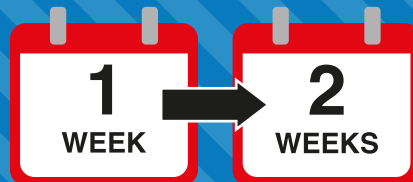
1600

Cases in the EU each year

12.7%
Mortality rate



INCUBATION PERIOD?:



WHERE TO FIND MORE INFORMATION?



WHAT PRODUCTS ARE EFFECTIVE?



MANAGING THE THREAT OF LISTERIOSIS?

